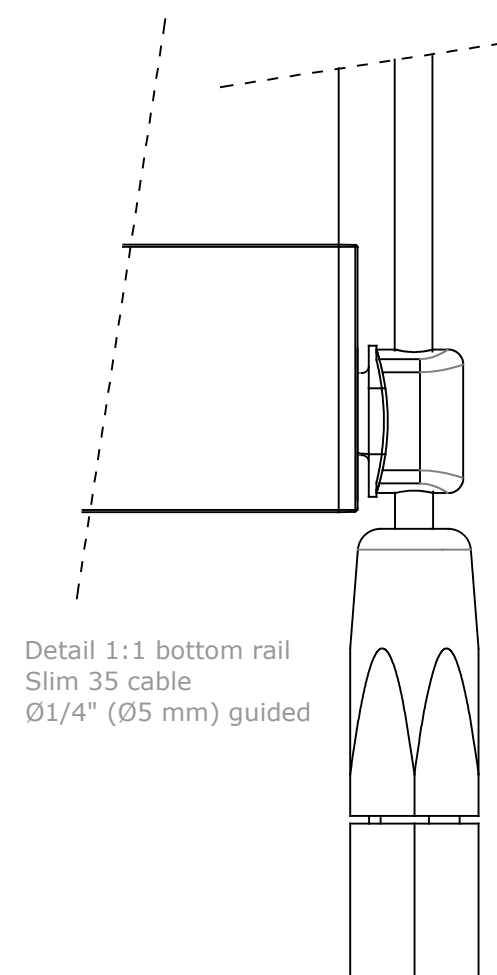
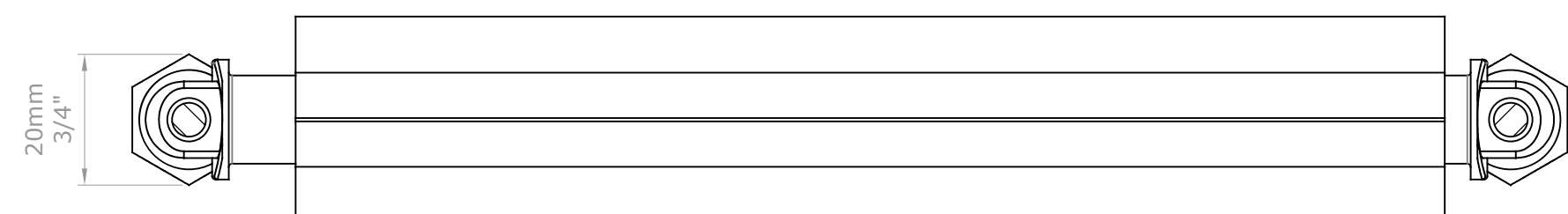
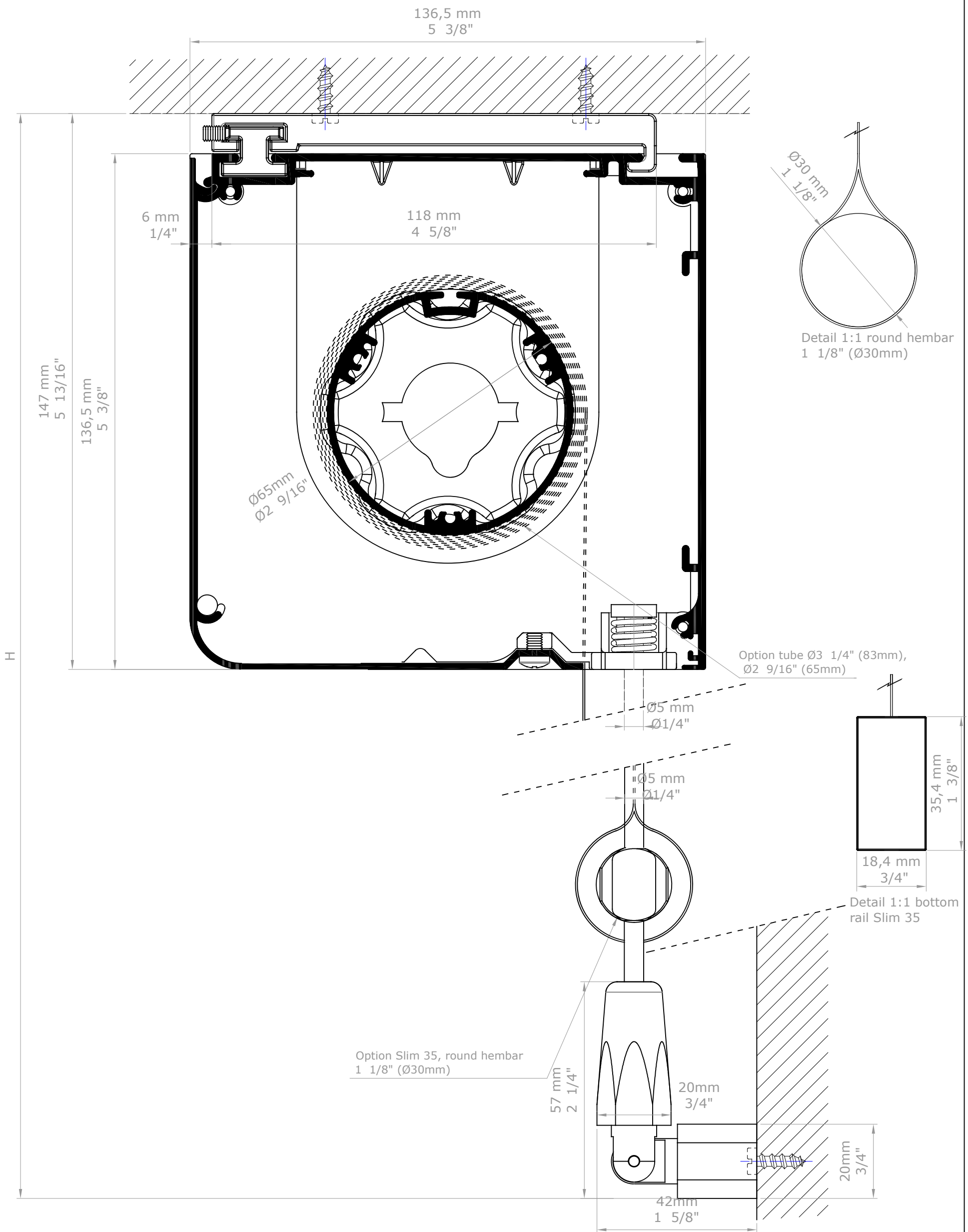


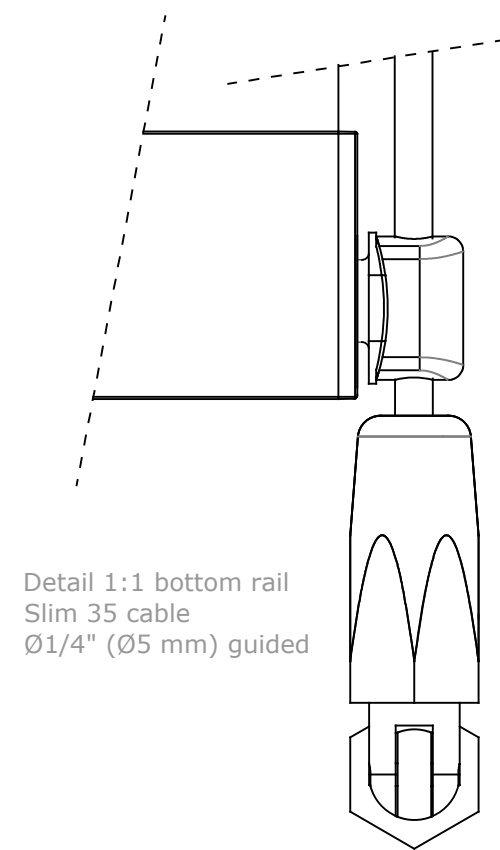
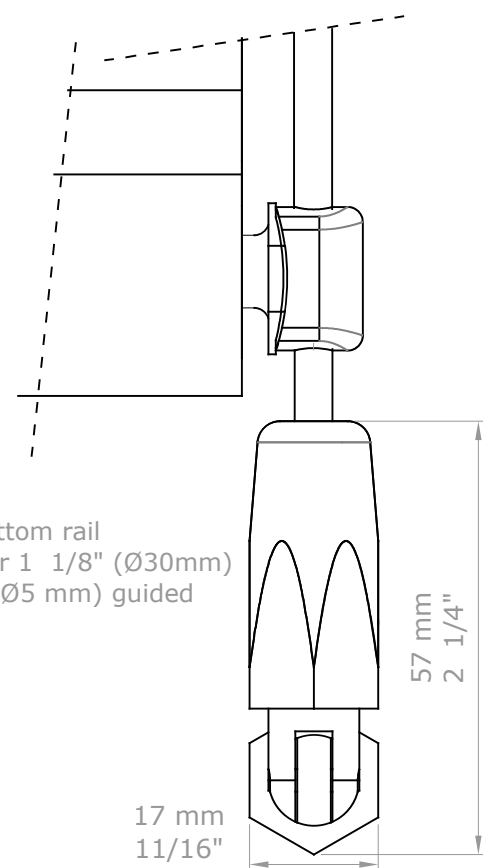
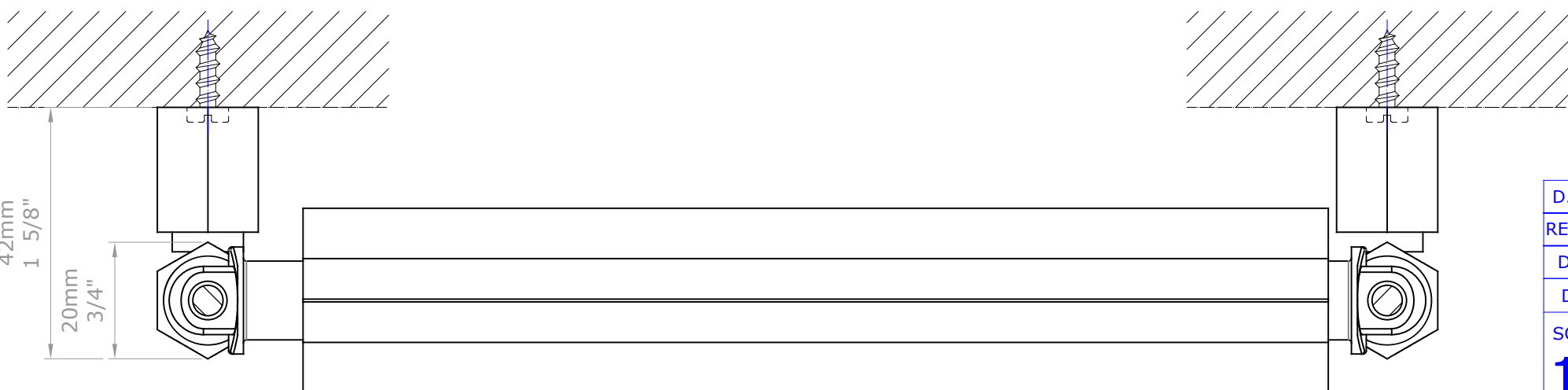
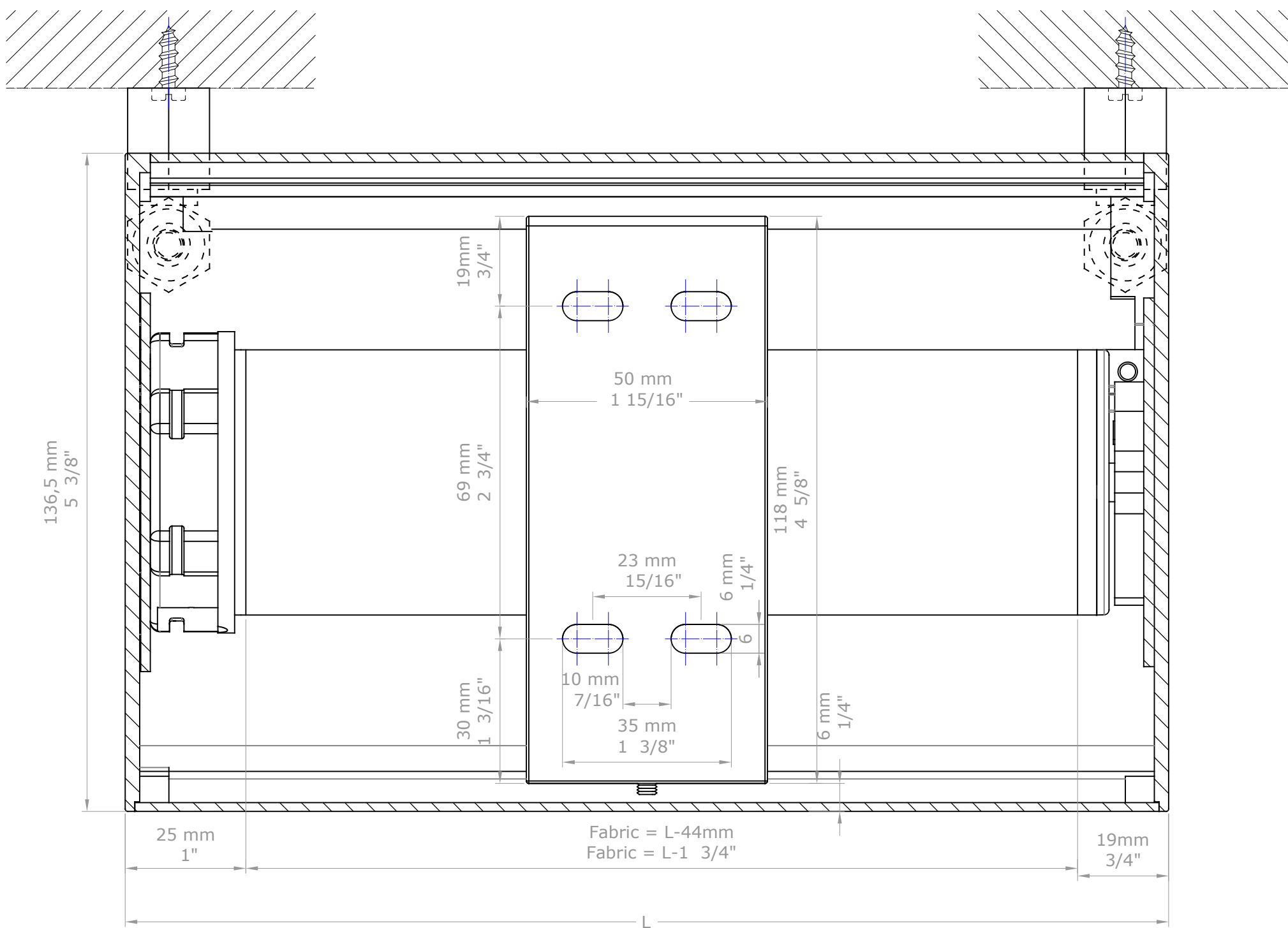
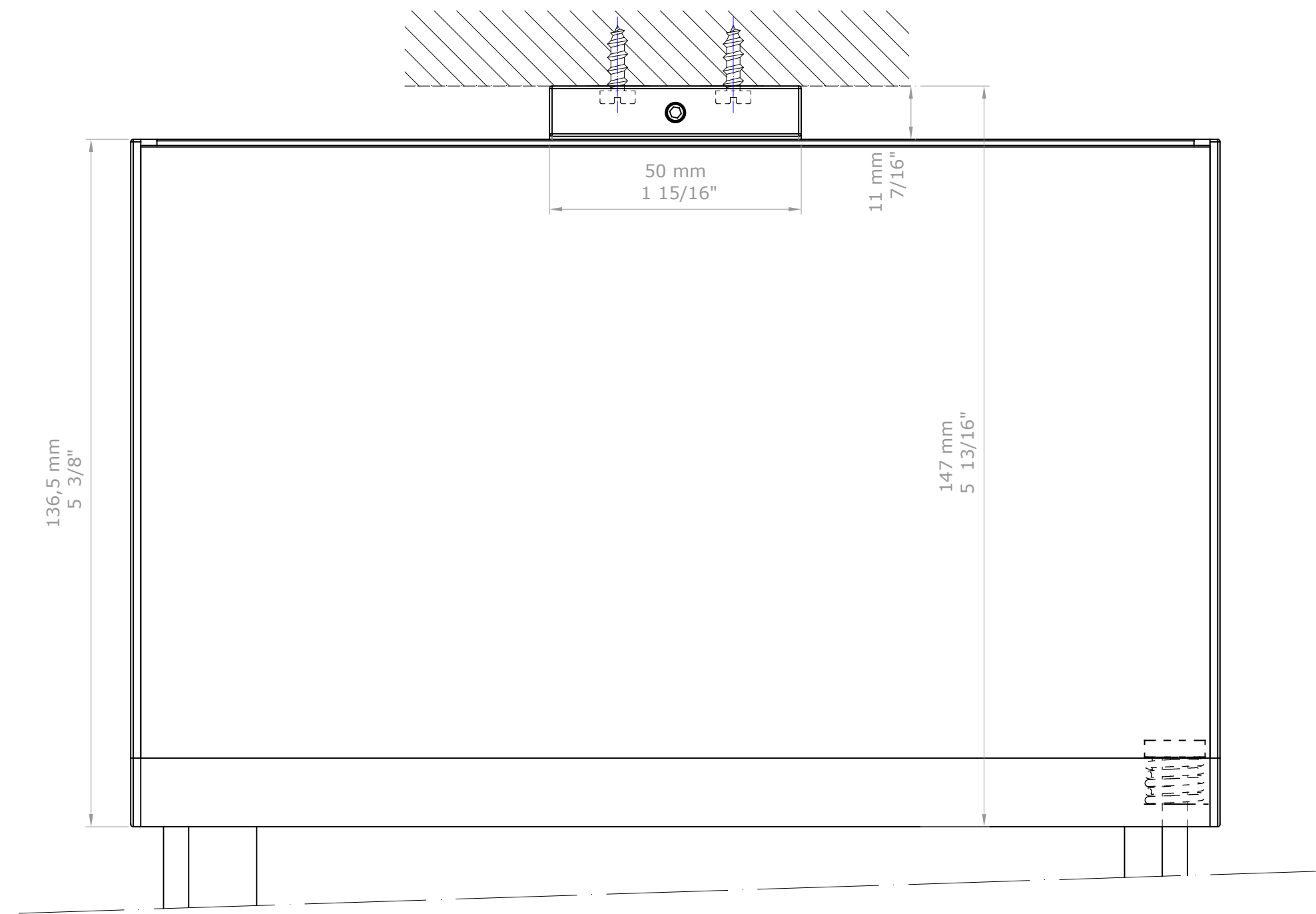
D. REVIS.		<b>BANDALUX</b>	
REVISION	1 2 3 4 5 6 7 8 9		
DATE	28-12-2017	PLANE N°	
DESIGN	Antonio F.	FORMAT	A-3
SCALE	Rolling blind in Box B-Box 5". Motor. Cable Ø1/4" (Ø5 mm) guided Installation: ceiling / floor Mechanism: Motor 50 Bottom rail: round hembar 1 1/8" (Ø30mm) Tube 2 9/16" (Ø65mm)		
<b>1/1</b>			



D. REVIS.		BANDALUX	
REVISION	123456789		
DATE	28-12-2017	PLANE N°	
DESIGN	Antonio F.	FORMAT	A-2
SCALE 1/1	Rolling blind in Box B-Box 5". Motor. Cable Ø1/4" (Ø5 mm) guided Installation: ceiling / floor Mechanism: Motor 50 Bottom rail: round hembar 1 1/8" (Ø30mm) Tube 2 9/16" (Ø65mm)		

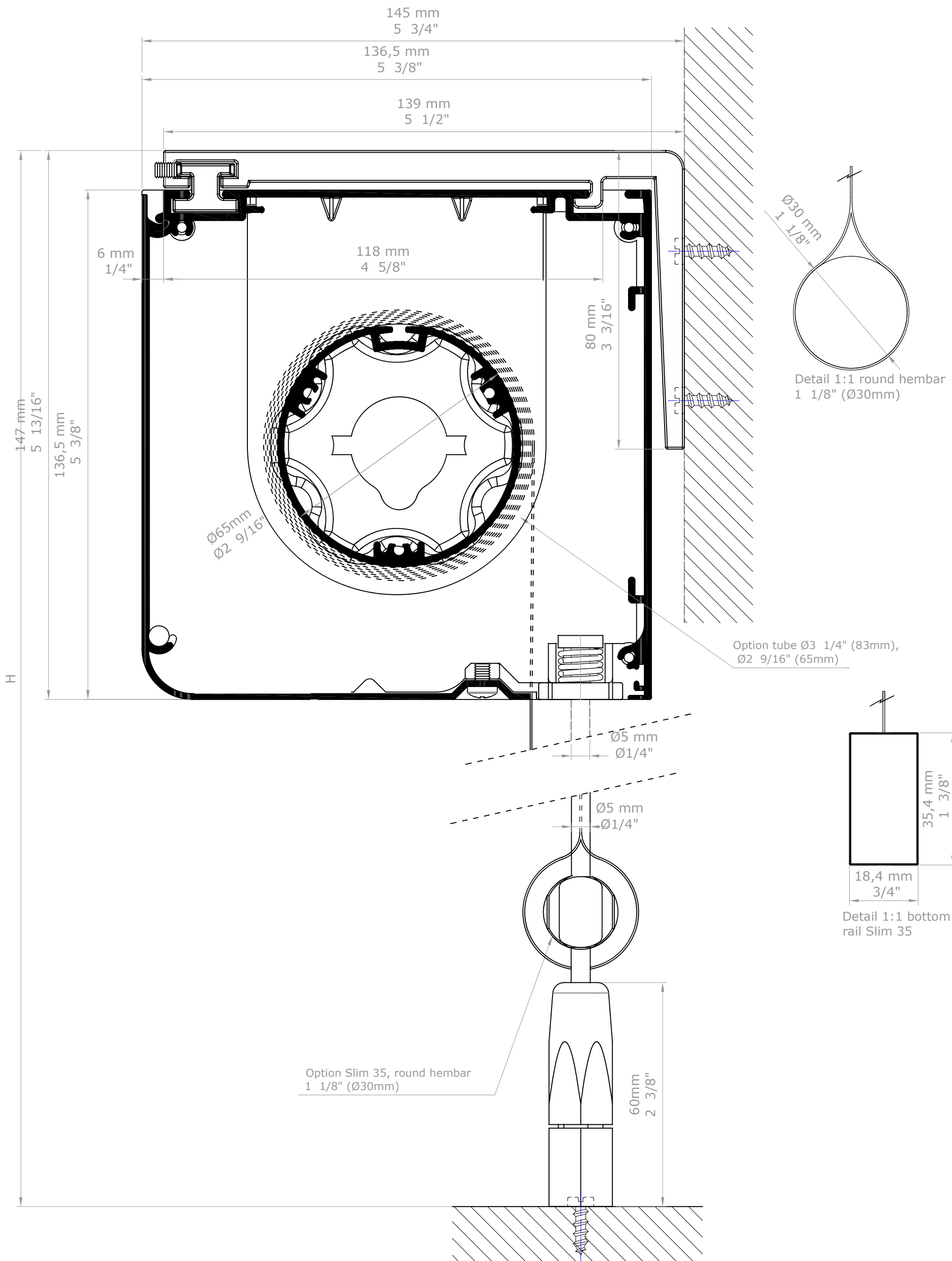


D. REVIS.		<b>BANDALUX</b>	
REVISION	1 2 3 4 5 6 7 8 9		
DATE	28-12-2017	PLANE N°	
DESIGN	Antonio F.	FORMAT	A-3
SCALE	Rolling blind in Box B-Box 5". Motor. Cable Ø1/4" (Ø5 mm) guided Installation: ceiling / wall Mechanism: Motor 50 Bottom rail: round hembar 1 1/8" (Ø30mm) Tube 2 9/16" (Ø65mm)		
<b>1/1</b>			

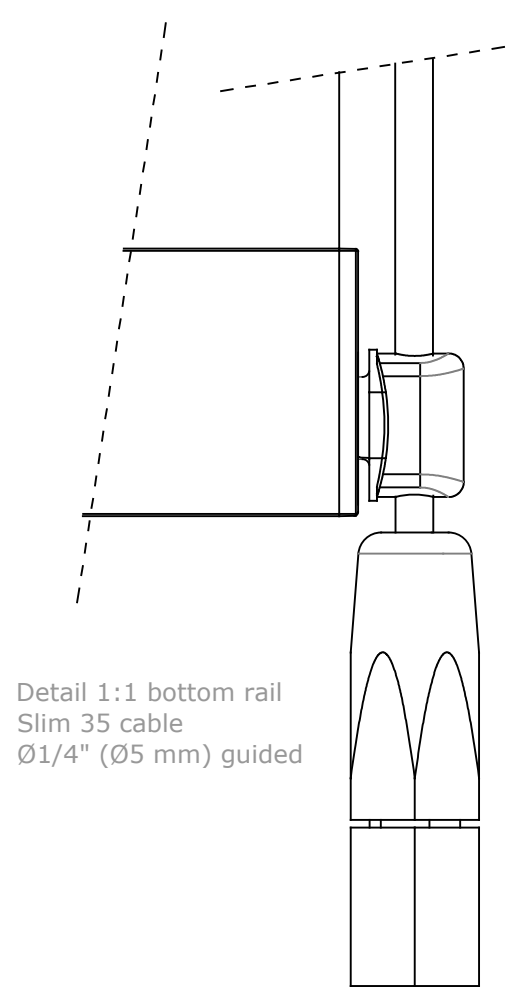
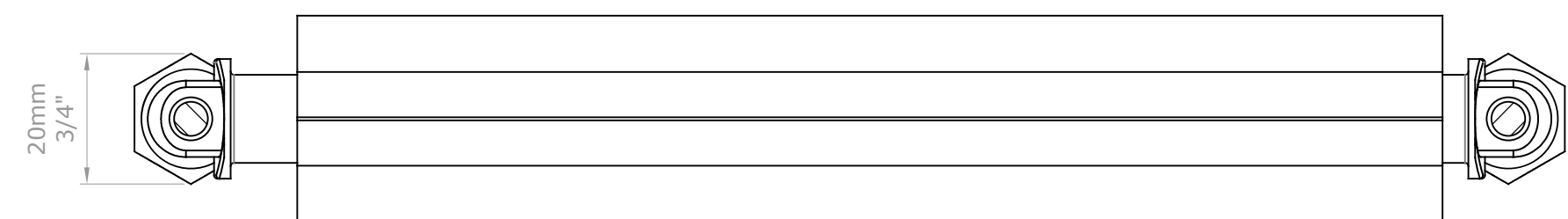


D. REVIS.			
REVISION	<a href="#">1</a> <a href="#">2</a> <a href="#">3</a> <a href="#">4</a> <a href="#">5</a> <a href="#">6</a> <a href="#">7</a> <a href="#">8</a> <a href="#">9</a>		
DATE	28-12-2017	PLANE N°	
DESIGN	Antonio F.	FORMAT	A-2
SCALE	Rolling blind in Box B-Box 5". Motor. Cable Ø1/4" (Ø5 mm) guided Installation: ceiling / wall Mechanism: Motor 50 Bottom rail: round hembar 1 1/8" (Ø30mm) Tube 2 9/16" (Ø65mm)		
1/1			

BANDALUX



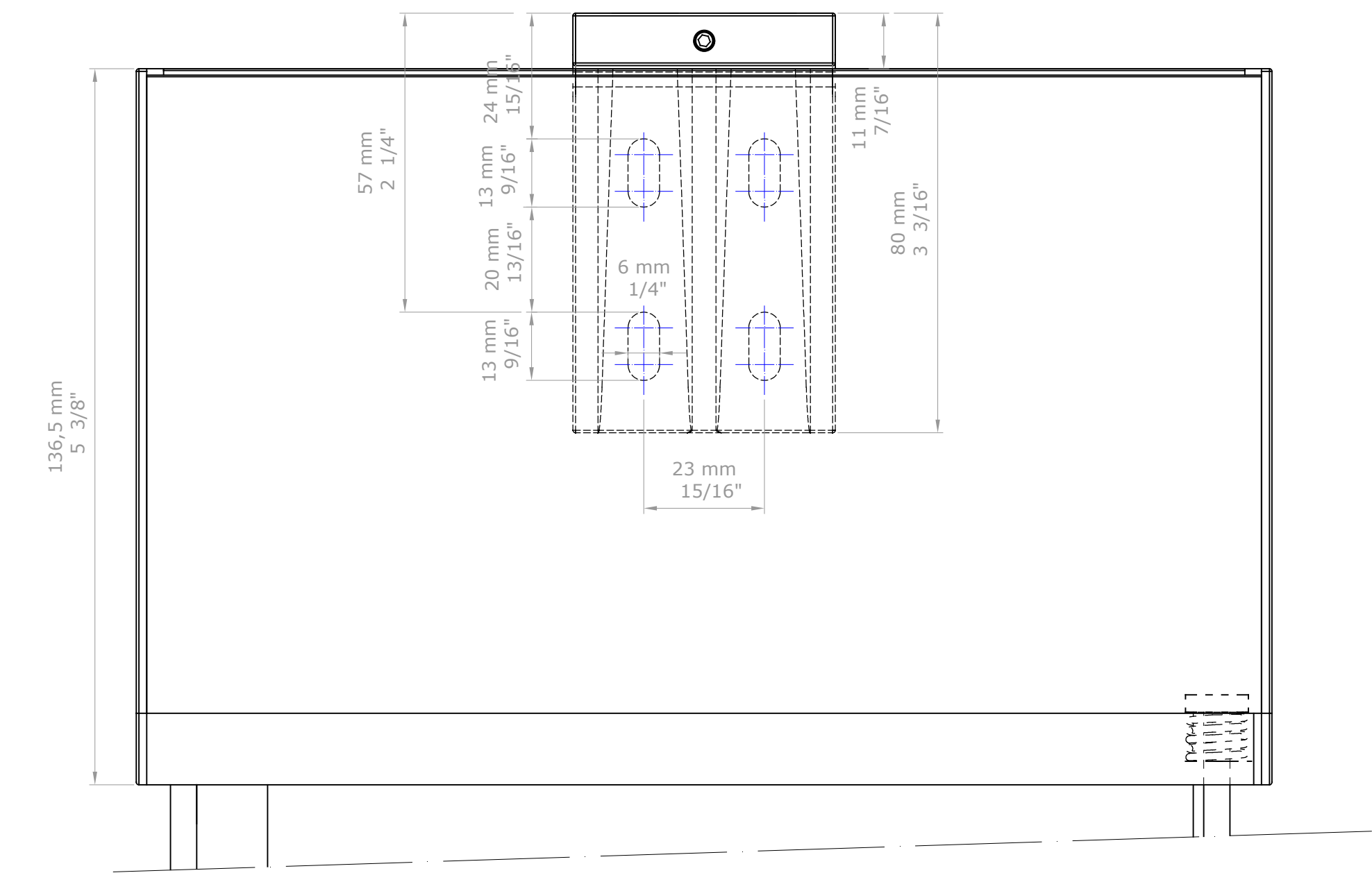
D. REVIS.		BANDALUX	
REVISION	123456789		
DATE	28-12-2017	PLANE N°	
DESIGN	Antonio F.	FORMAT	A-3
SCALE	Rolling blind in Box B-Box 5". Motor. Cable Ø1/4" (Ø5 mm) guided Installation: wall / floor Mechanism: Motor 50 Bottom rail: round hembar 1 1/8" (Ø30mm) Tube 2 9/16" (Ø65mm)		
1/1			



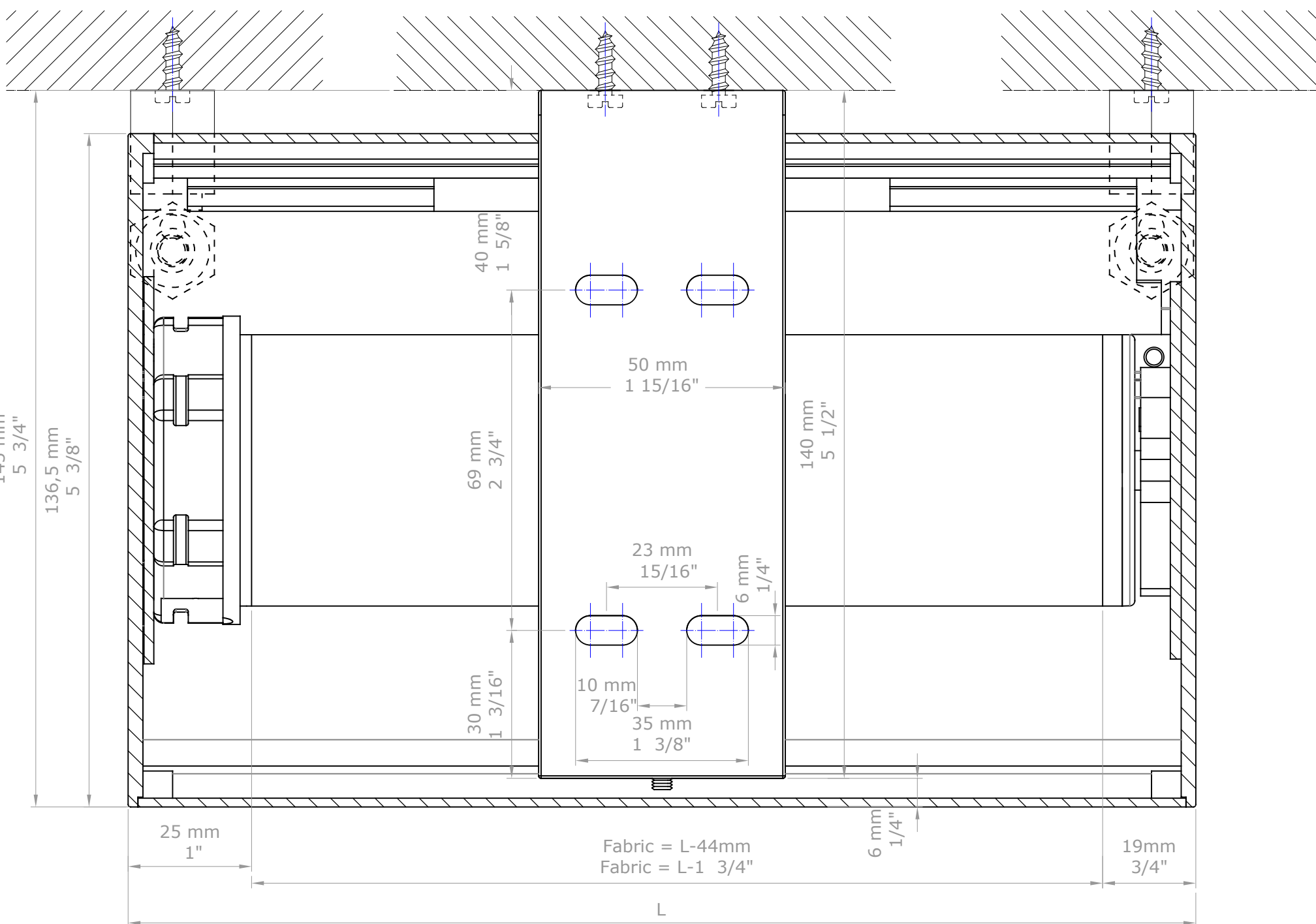
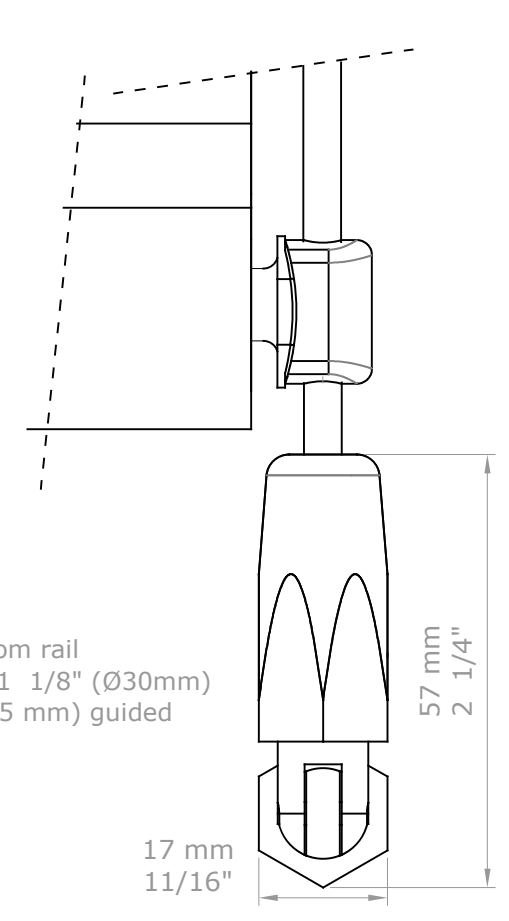
D. REVIS.		BANDALUX	
REVISION	123456789		
DATE	28-12-2017	PLANE Nº	
DESIGN	Antonio F.	FORMAT	A-2
SCALE <b>1/1</b>	Rolling blind in Box B-Box 5". Motor. Cable Ø1/4" (Ø5 mm) guided Installation: wall / floor Mechanism: Motor 50 Bottom rail: round hembar 1 1/8" (Ø30mm) Tube 2 9/16" (Ø65mm)		



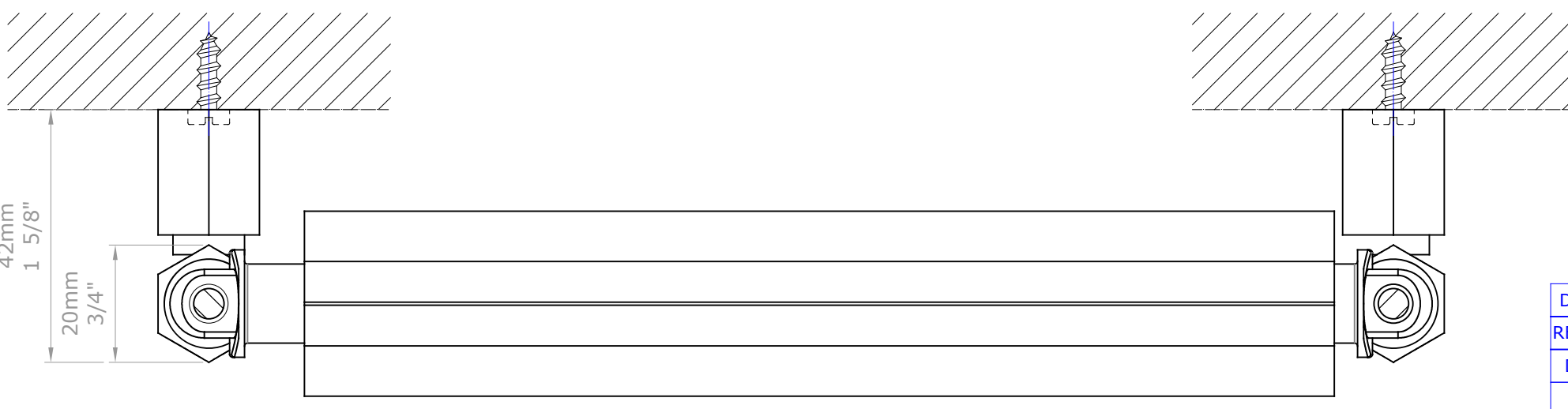
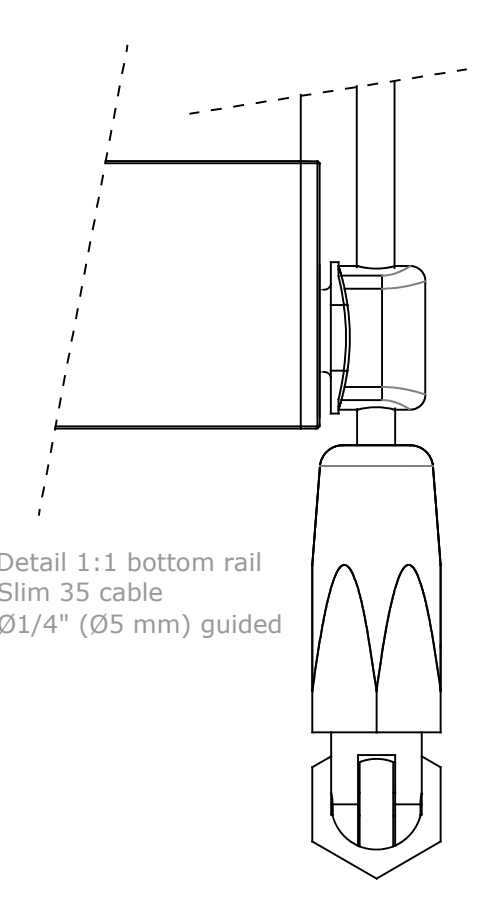




Detail 1:1 bottom rail  
round hembar 1 1/8" (Ø30mm)  
cable Ø1/4" (Ø5 mm) guided



Detail 1:1 bottom rail  
Slim 35 cable  
Ø1/4" (Ø5 mm) guided



D. REVIS.		BANDALUX	
REVISION	123456789		
DATE	28-12-2017	PLANE N°	
DESIGN	Antonio F.	FORMAT	A-2
SCALE	Rolling blind in Box B-Box 5". Motor. Cable Ø1/4" (Ø5 mm) guided Installation: wall / wall Mechanism: Motor 50 Bottom rail: round hembar 1 1/8" (Ø30mm) Tube 2 9/16" (Ø65mm)		
1/1			